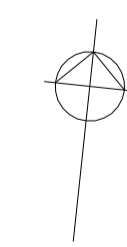
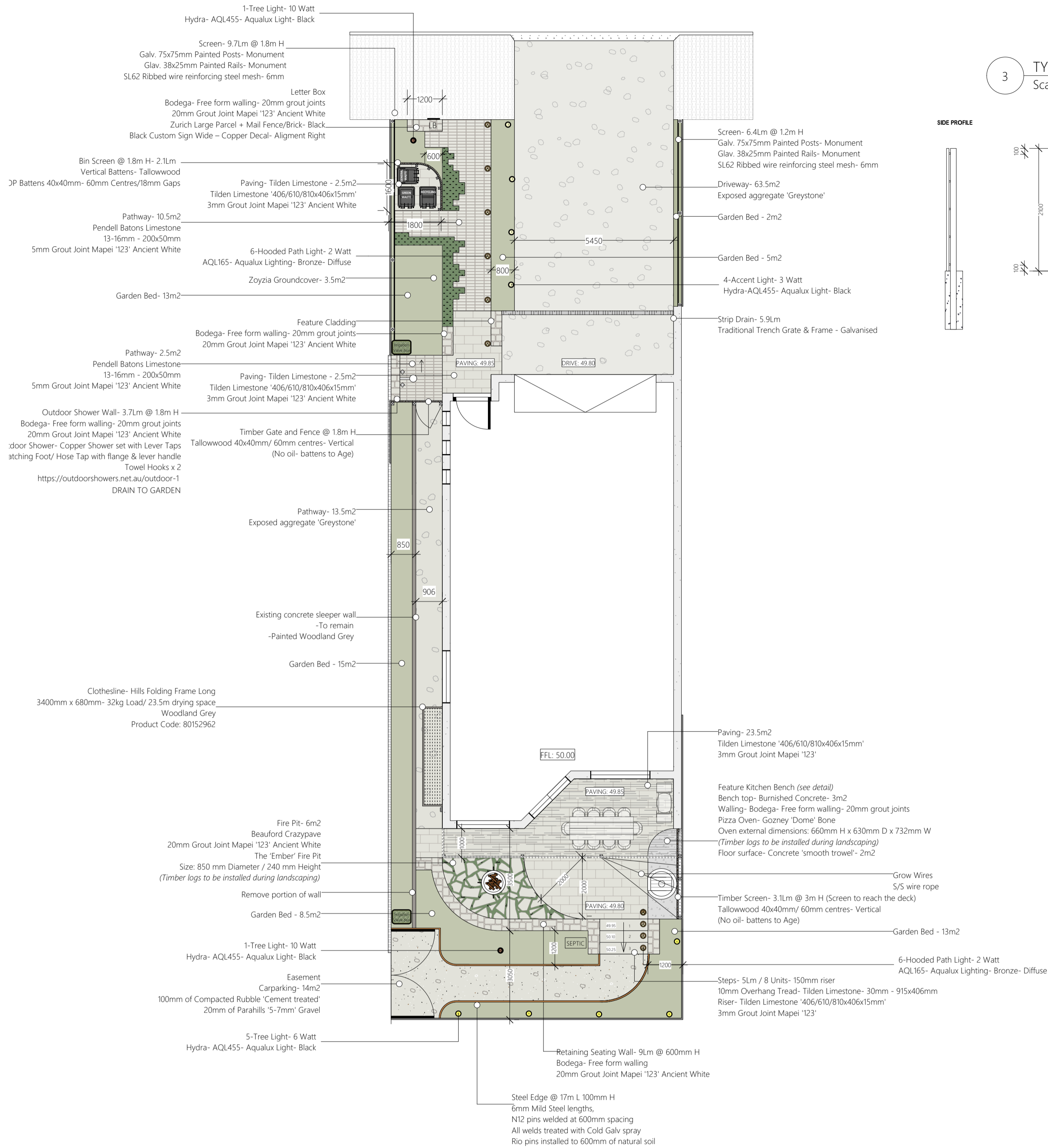
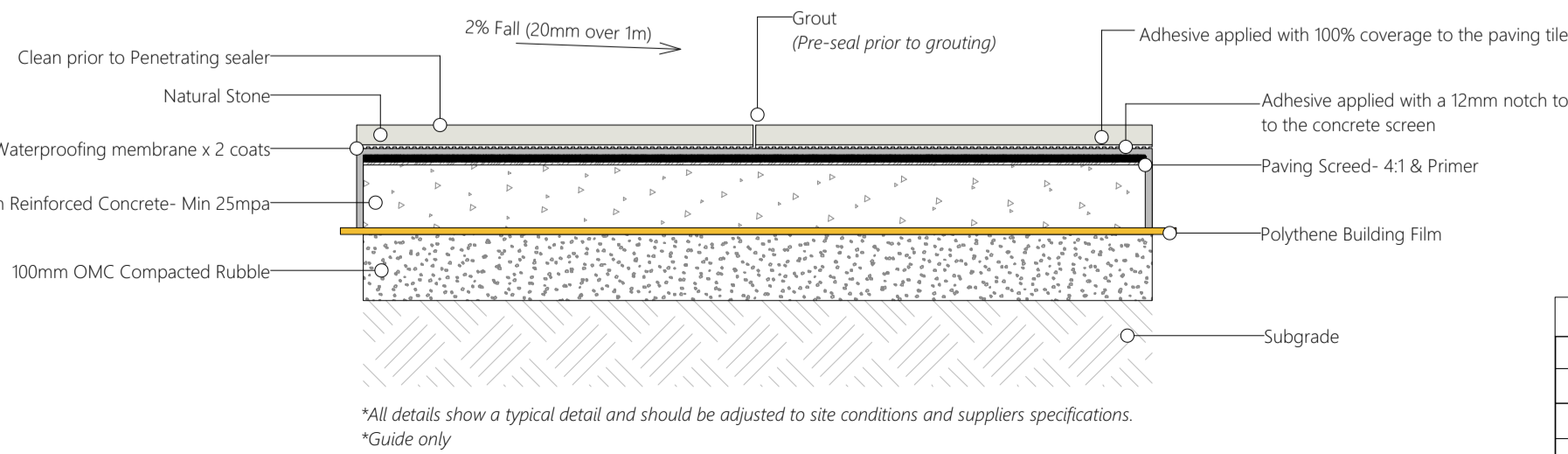


1 LANDSCAPE PLAN
Scale: 1:100



- Lawn
- Groundcover
- Garden Bed
- Storyfell 5-7mm Gravel
- Exposed Aggregate Concrete 'Greystone'
- Feature Cladding Bodega
- Pendell Batons- 13-16mm - 200x50mm
- Tilden Limestone- 30mm - 915x406mm
- Accent Light- Hydra- 3 watt- AQL455- Aqualux Light- Black- 3000K
- Accent Light- Hydra- 6 watt- AQL455- Aqualux Light- Black- 3000K
- Tree Light- Hydra- 10 watt- AQL455- Aqualux Light- Black- 3000K
- Hooded Path Light- 2 Watt- AQL165- Aqualux Lighting- Bronze- Diffuse

10 TYPICAL- DIRECT STICK TILING
Scale: 1:10



*All details show a typical detail and should be adjusted to site conditions and suppliers specifications.
*Guide only

LIGHTING LIST	
2 Tree Light- 10 Watt	Hydra- AQL455- Aqualux Light- Black
12 Hooded Path Light- 2 Watt	AQL165- Aqualux Lighting- Bronze- Diffuse
4 Accent Light- 3 Watt	Hydra-AQL455- Aqualux Light- Black
5 Tree Light- 6 Watt	Hydra- AQL455- Aqualux Light- Black

8 LIGHT FITTINGS



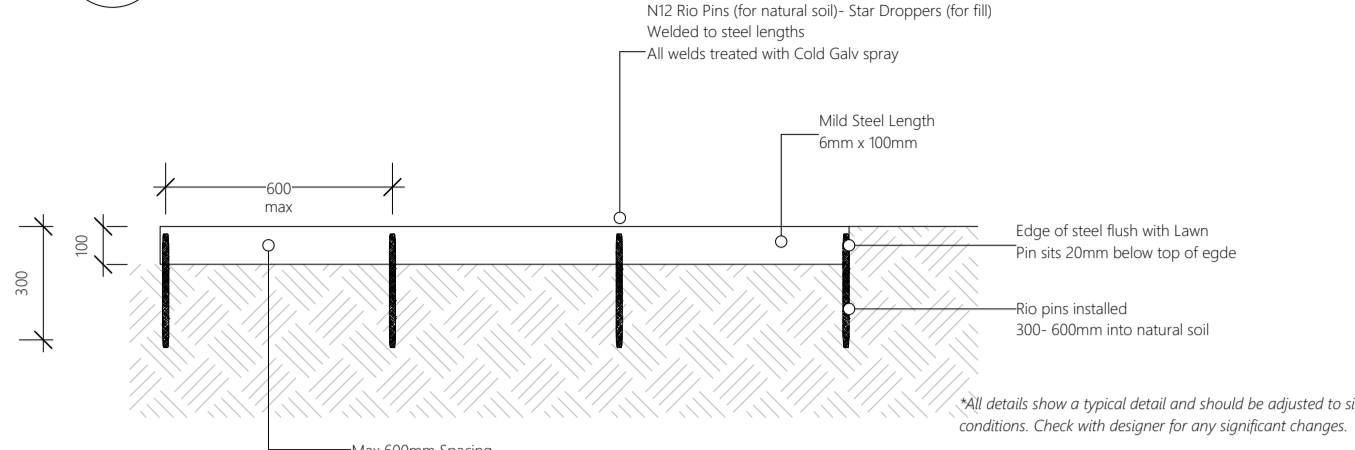
Accent/ Tree Light Hooded Light

9 MATERIAL PALETTE

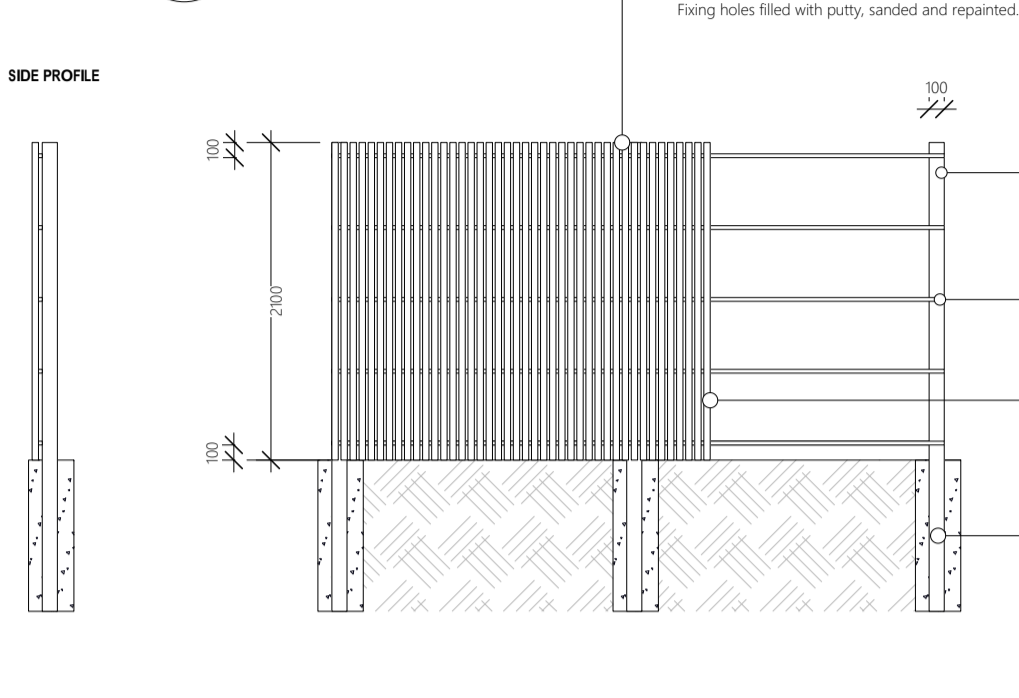


Concrete 'Greystone' Tilden Limestone Walling 'Bodega' Pendell Batons Storyfell 10mm Gravel

2 100mm MILD STEEL EDGING DETAIL
Scale: 1:20

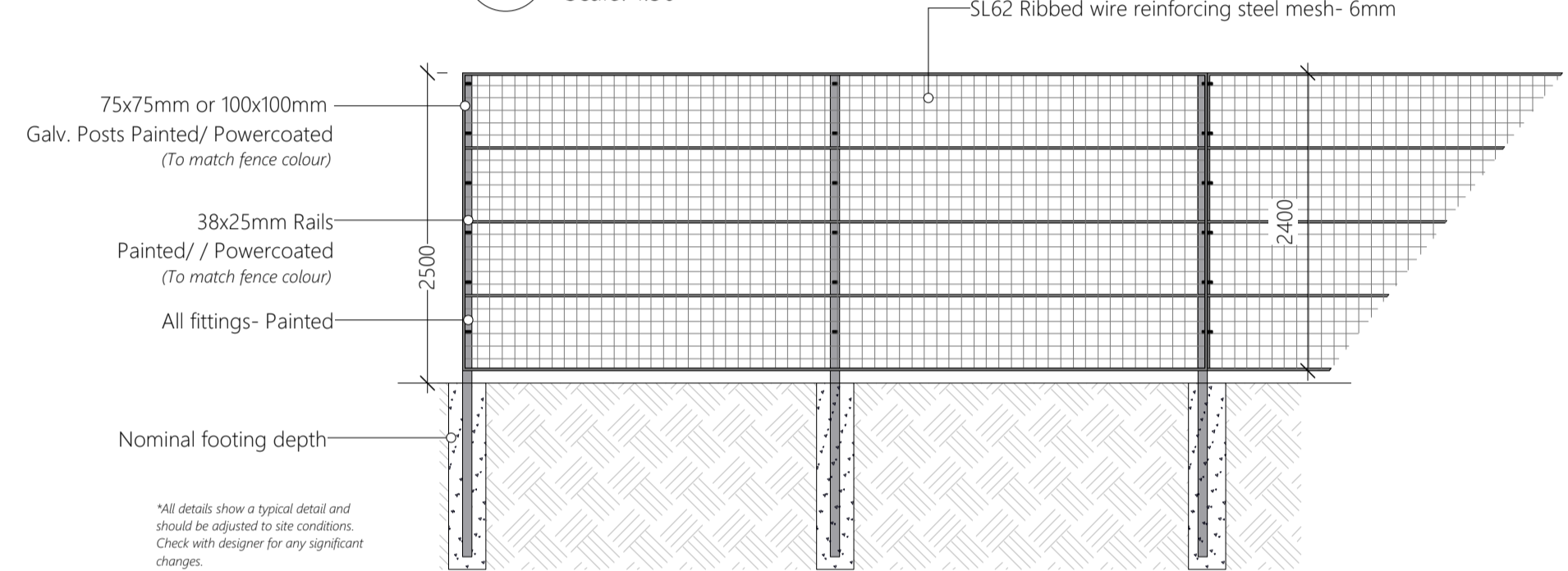


3 TYPICAL-SCREEN DETAIL
Scale: 1:50



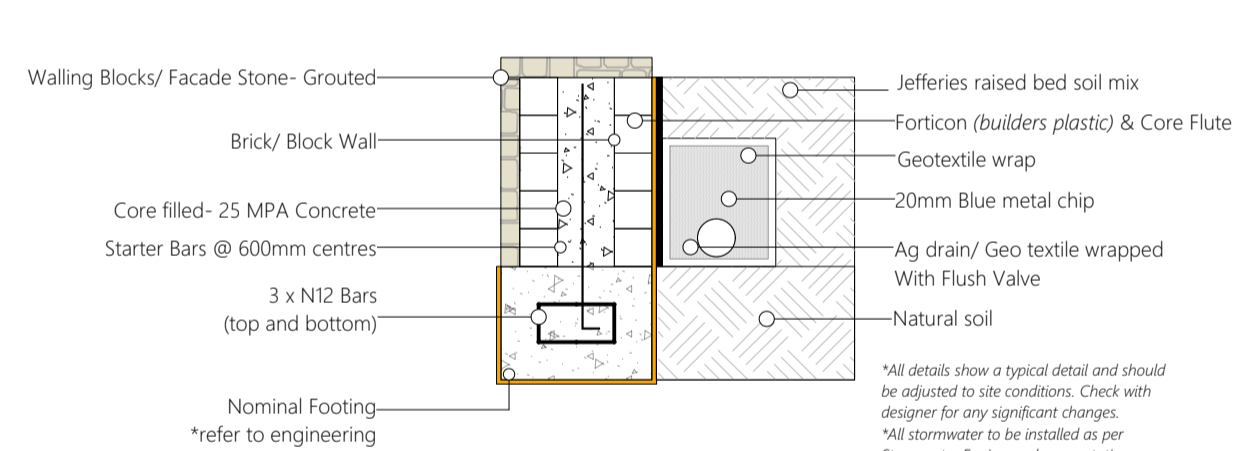
*All details show a typical detail and should be adjusted to site conditions. Check with designer for any significant changes.

4 TYPICAL- SCREEN DETAIL
Scale: 1:50



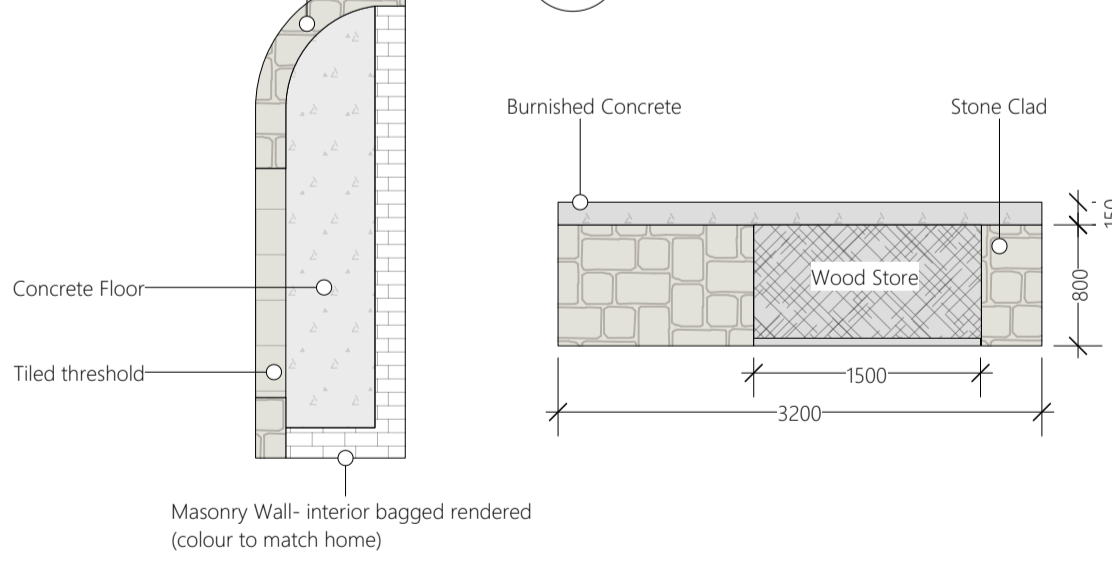
*All details show a typical detail and should be adjusted to site conditions. Check with designer for any significant changes.

5 TYPICAL- RETAINING WALL & DRAINAGE DETAIL
Scale: 1:20



*All details show a typical detail and should be adjusted to site conditions. Check with designer for any significant changes.
*All stormwater to be installed as per Stormwater Engineers documentation or as directed by a licensed landscaper. LGD may show indicative stormwater infrastructure for the purpose of drain cover material specification only.

6 BENCH CONCEPT
Scale: 1:50



7 OUTDOOR SHOWER



Walling 'Bodega' Pendell Batons Shower Fitting

SOFTSCAPE SPECIFICATIONS

All contractors are required to adhere to the applicable Australian Standards and Local Council Bylaws while maintaining an up-to-date Builders Licence, inclusive of the necessary conditions pertinent to the specific scope of work being executed.

EARTHWORKS

- Prior to the commencement of earthworks all in-ground services are to be accurately located to ensure they are not disturbed during excavation.
- The Landscaper/ Contractor is to ensure excavation does not undermine existing structures.
- 1.1 EARTHWORKS- GARDEN BEDS
 - Excavate existing soil to a depth that allows the addition of soil additives and mulch. Typically 225mm in total.
- 1.2 EARTHWORKS- LAWN
 - Excavate existing soil to a depth that allows the addition of soil additives and instant lawn rolls. Typically 200mm in total.

SOIL PREPARATION AND MULCHING

- All imported materials to comply with Australian Standards. Compost- AS445, Loom & Soils- AS4419, Mulch- AS4454.
- Prior to the commencement of cultivation all in-ground services are to be accurately located to ensure they are not disturbed during works.
- The Landscaper is to ensure cultivation does not undermine existing structures.
- 2.1 GARDEN BEDS
 - The Landscaper to supply 100mm Organic Loam 60/40 mix, 50mm Organic Compost, Gypsum (kg/ m²).
 - Soil additives to be mixed, spread and cultivated into the top 300mm of existing soil.
- 2.2 RAISED GARDEN BEDS
 - The Landscaper to supply a raised bed soil mix containing a soil wetting agent and typically a Organic Loam 60/40 mix and Organic Compost.
 - Unless specified, the landscaper is not responsible for the the water proofing of pots and raised garden beds.
- 2.3 LAWN AREAS
 - The Landscaper to supply 150mm Sandy Loam 80/20 mix spread over lawn areas with an application of Gypsum (kg/ m²).
- 2.4 MULCHING
 - The Landscaper shall supply 75mm of an organic soil improving mulch to a depth of 75mm. Typically Recover mulch.
 - The Landscaper is to manually check and remove all mulch material from the stems of plants.

IRRIGATION

- The Landscaping, garden beds, lawn areas have been designed with the following irrigation system required for it's success.
- 3.1 GARDEN BEDS
 - 2L/ hour hour spiked drippers to be installed to shrubs, groundcovers, climbers and hedges. 2 x 4L/ hour drippers installed to trees and larger plants. or techline Netafim AS 0.3m 1.6L/h installed in a grid pattern at 300mm spacings.
- 3.2 LAWNS
 - Landscaper to install MP Rotator Pop-up Sprays.
- 3.3 CONTROLLER
 - Rainbird controller with LINK WIFI module or LINK WIFI ready
- 3.4 PROGRAMING
 - A seasonal program to be provided to the client for the suggested irrigation times

PLANTING

- Typically the Landscaper is to set out plants as per Planting Plan for the inspection of Landscape Designer prior to installation.
- All soil preparation to be carried out prior to planting.
- Planting not to proceed under extreme heat conditions.
- 4.1 PLANT SUPPLY
 - All plants are to be healthy, grown locally (where possible) and be free of weeds, pests and diseases.
 - Alternative plant varieties and pot sizes will be substituted if specified plants are unavailable.

4.2 PLANTING PROCEDURE

- Refer to detail P-4.2for further details.
- Excavate planting hole to twice the width of the pot size.
- Planting hole to be excavated to the depth of the pot size avoiding water build up below root zone.
- Place plant in hole and backfill with improved soil material, free of weeds, stones and soil sods.
- The root ball of plants to be handled with care, root disturbance is to be avoided.
- 4.3 STAKES AND TIES
 - All trees supplied in 300mm pots and above to be staked. Refer to detail P-4.3 for further details.
 - All stakes shall be durable hardwood, straight and free from knots or twists.
 - Drive stakes to a minimum of 600mm into the ground, outside of the plants root ball.
 - 2 stakes with loped ties are required per plant.
 - Tree ties to be of a flexible canvas or rubber material. Once tied, trees trunks should be able to move marginally. Stakes are required to protect trees in high wind conditions only.

STORMWATER

All stormwater to be installed as per Stormwater Engineers documentation or as directed by a licensed landscaper. LGD may show indicative stormwater infrastructure for the purpose of drain cover material specification only.

HARDSCAPE SPECIFICATIONS

All installations to comply with Australian Standards, National Construction Codes / BCA, Industry Practice, Supporting Engineering Documentation, The CSIRO 10/91 Foundation Maintenance, Footing Performance document and White Ant Warranty Certification.
Note: Any new fences installed must comply with The South Australian Fences Act 1975, and Regulatory Government Approvals.

PAVING & EXTERIOR TILING

- All paving and exterior tiling to comply with:
 - AS 3958: 2023- Installation of ceramic and stone tiles
 - AS 2870:2017- Residential slabs and footings
 - AS 2783:1992- Use of reinforced concrete for small swimming pools
 - AS 3660:12000- Termite management- New building work
 - AS 3660:2:2017- Termite management- In and around existing buildings and structure
 - AS 3727: 1: 2016- Pavements- Residential

DRAINAGE

- AS/NZS 3500.3:2018- Plumbing and Drainage- Stormwater drainage
- RETAINING WALLS
 - AS 4678: 2002- Earth-retaining structures

BUILDERS LICENCE

South Australia requires all Landscapers to carry a Builders Licence. Master Builders of SA certifies the qualifications whilst the office of Consumer and Business Services manages the licencing and public records.
A Landscaper entering into a building contract with a consumer requires a 'Building Work Contractor' licence whilst a general landscaper working under supervision may hold a 'Building Work Supervisor' licence.
A Builders Work Contractor licence ensures the Landscaper has successfully completed Business Management training along with the insurances required to cover landscaping works.
Lee Gray Landscape Design (LGD) will recommend Landscapers that are qualified and licenced for the works shown in the Landscape Design.
LGD is unable to be involved with projects where an unlicensed/ unqualified landscaper has been engaged.
It is at the risk of the client if an unlicensed landscaper has been engaged. LGD strongly advises that the landscaping specified is beyond the skill set of an unlicensed landscaper.
The following list shows the level of experienced and certification required to undertake a typical LGD landscape:

BUILDING WORK CONTRACTOR WITH CONDITIONS:

- BRICK/SEGMENTAL PAVING
- BRICKLAYING LTD TO 1M IN HEIGHT
- CONCRETE PATH PAVING
- CONSTRUCTION WATERPROOFING
- DECKS LTD TO 1M IN HEIGHT
- EARTHWORKS CONSTRUCTION LTD TO SITE PREPARATION, EXCAVATION & TRENCHING
- FENCING
- RENDERING & TEXTURE COATING
- RETAINING WALLS
- STONE VENER INSTALLATION
- STORMWATER DRAINAGE LTD TO 90MM
- WALL & FLOOR TILING LTD TO EXTERNAL
- WATER TANK INSTALLATION LTD TO ABOVE GROUND
- SWIMMING POOL CONSTRUCTION (where applicable)

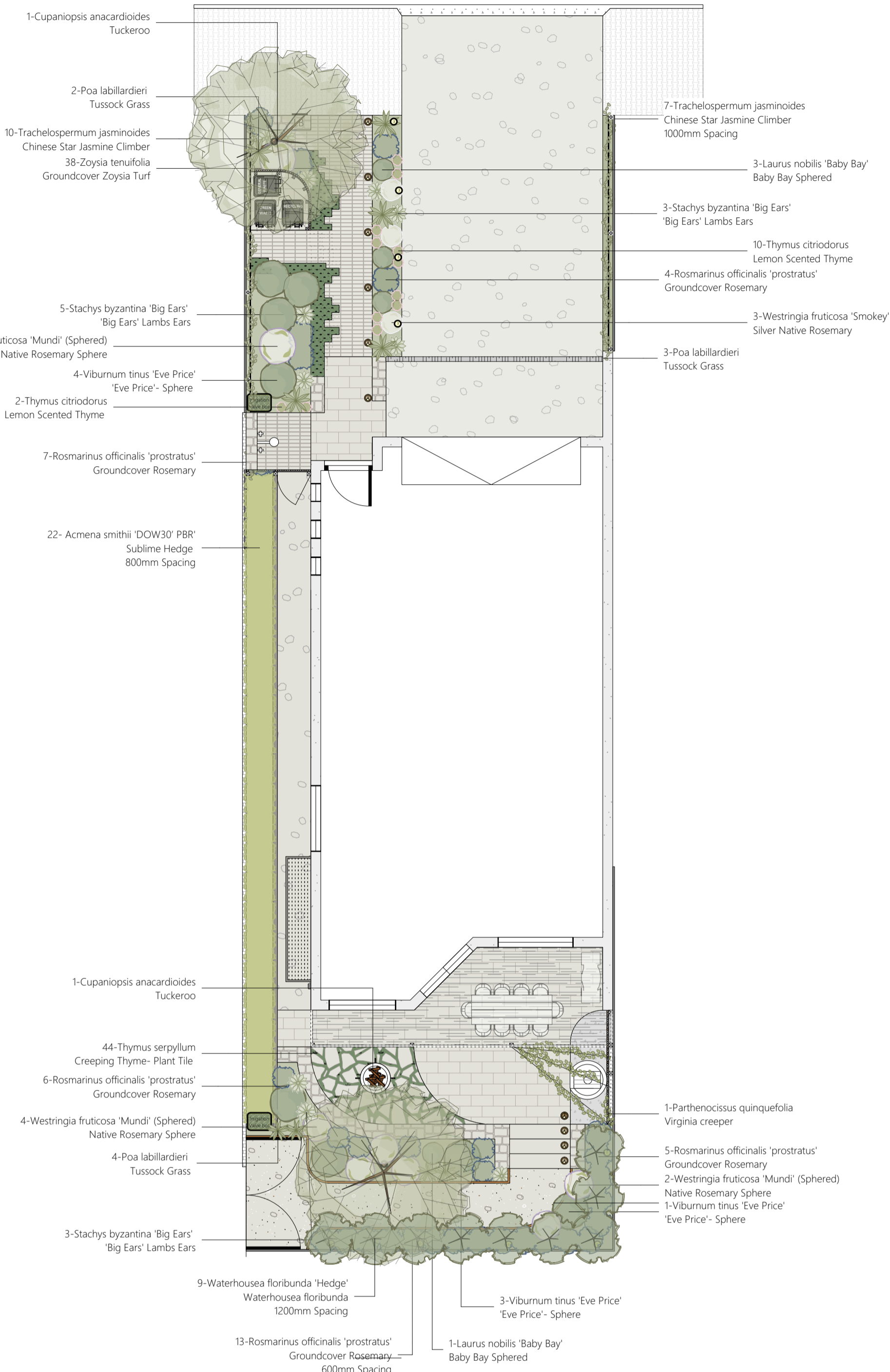
© Copyright Lee Gray Drawings have been developed for the purpose of Landscape Design only. Seek engineering documents prior to the commencement of planning and constructing structures. Check all dimension on site prior to planning and construction. It is advised that all landscaping and building works be constructed by a qualified professional building worker. While LGD will design a beautiful and functional landscape, the finishing will depend on the quality of the trades employed by the client. All plans selected are fairly and have been successfully grown in the South Australian region, the success of these plants will depend on the soil preparation, planting and irrigation of the specimens. To reduce the construction price for clients LGD will recommend landscaping and building contractors but will not engage in the management of the project. All trades recommended have proven experience in working independently on LGD plans.

PROJECT 5 Henry Street, Port Elliot
CLIENT Curyer, Belinda and Leigh
DWG Landscape Plan

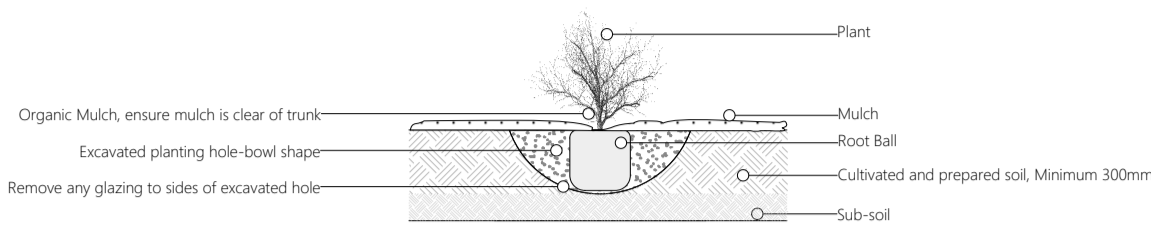
Version 3
DATE 16.10.2025
SCALE 1:100 on A1
PAGE # 1 A
ISSUE # A



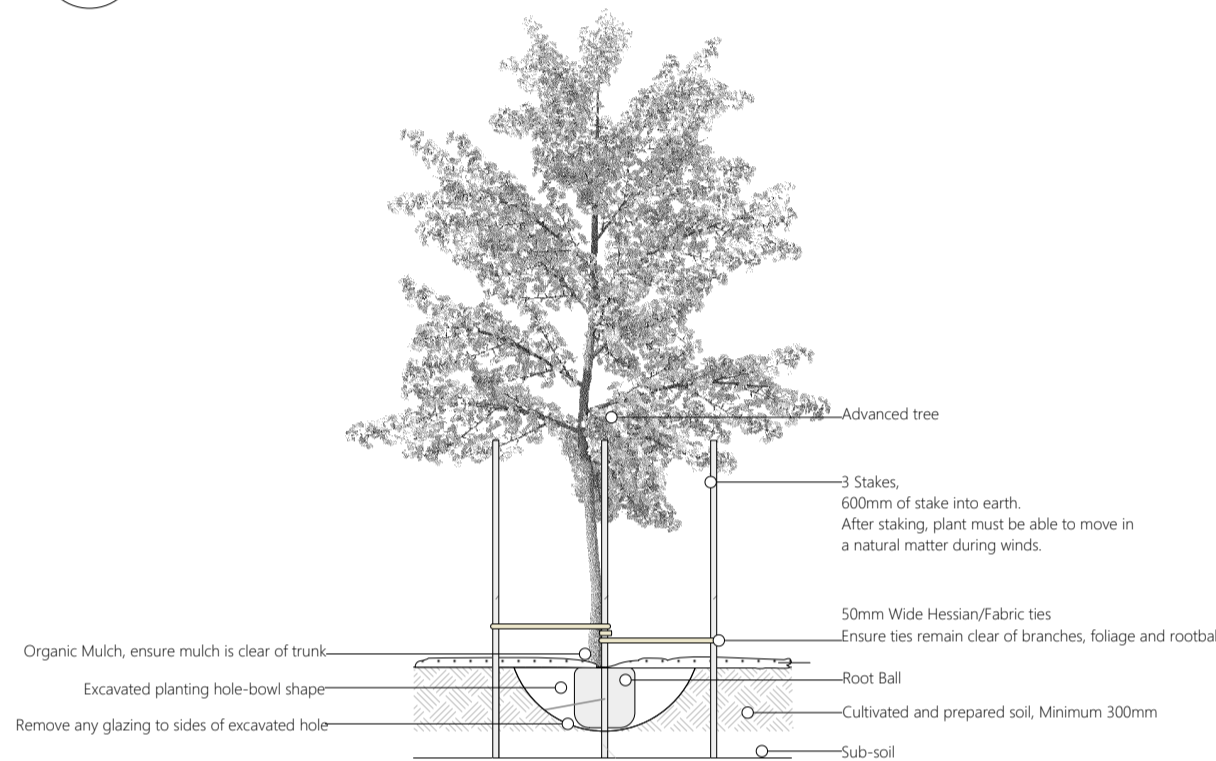
1 PLANTING PLAN
Scale: 1:100



4 PLANTING DETAIL I SHRUBS
Scale: 1:100



5 PLANTING DETAIL I TREES
Scale: 1:100



2 PLANTING SCHEME (FRONT)



3 PLANTING SCHEME (BACK)



6 PLANTING CONCEPT



7 PLANTING CONCEPTS



Stepping Stones



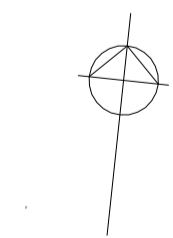
Native Plantings



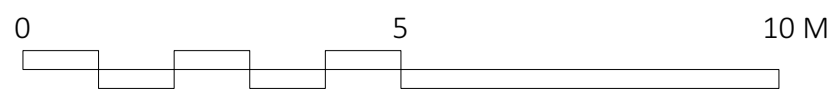
Front Pathway



Front Pathway



Lawn
Groundcover
Garden Bed
Stonyfell 5-7mm Gravel
Exposed Aggregate Concrete 'Greystone'
Feature Cladding Bodega
Pendell Batons- 13-16mm - 200x50mm
Tilden Limestone- 30mm - 915x406mm
Accent Light- Hydra- 3 watt- AQL455- Aqualux Light- Black- 3000K
Accent Light- Hydra- 6 watt- AQL455- Aqualux Light- Black- 3000K
Tree Light- Hydra- 10 watt- AQL455- Aqualux Light- Black- 3000K
Hooded Path Light- 2 Watt- AQL165- Aqualux Lighting- Bronze- Diffuse



© Copyright Lee Gray | Drawings have been developed for the purpose of Landscape Design only. Seek engineering documents prior to the commencement of planning and constructing structures. Check all dimension on site prior to planning and construction. It is advised that all landscaping and building works be constructed by a qualified professional building a career South Australian building firms. While LGD will design a beautiful and functional landscape, the finishing will depend on the quality of the trades employed by the client. All plans selected are healthy and have been successfully grown in the South Australian region; the success of these plans will depend on the soil preparation, planting and irrigation of the specimens. To reduce the construction price for clients LGD will recommend landscaping and building contractors but will not engage in the management of the project. All trades recommended have proven experience in working independently on LGD plans.

PROJECT 5 Henry Street, Port Elliot
CLIENT Curyer, Belinda and Leigh
DWG Planting Plan

DATE 16.10.2025
SCALE 1:100 on A1

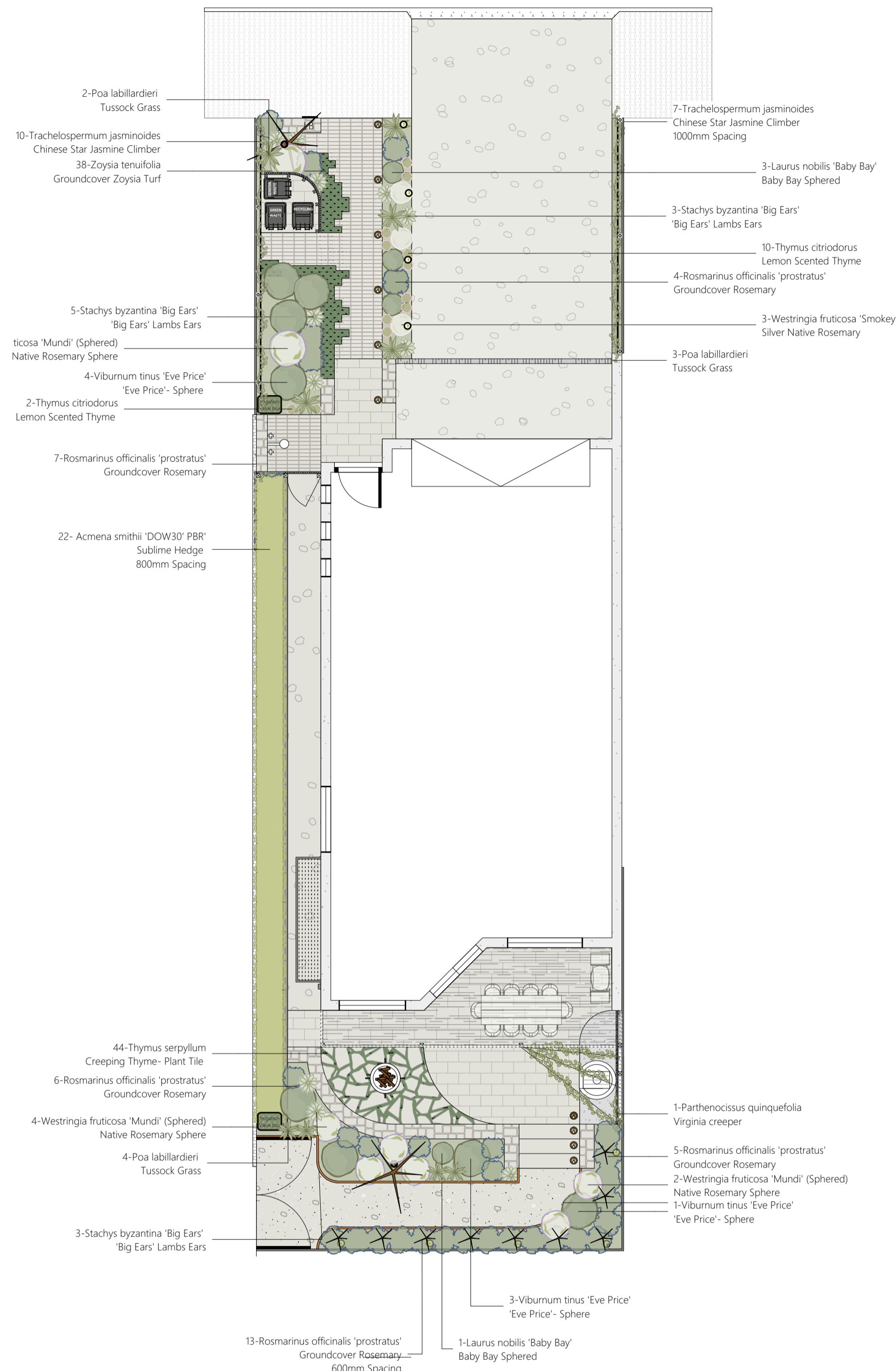
Version 3
DWG # 2 A
ISSUE # A



1

UNDERPLANTING PLAN

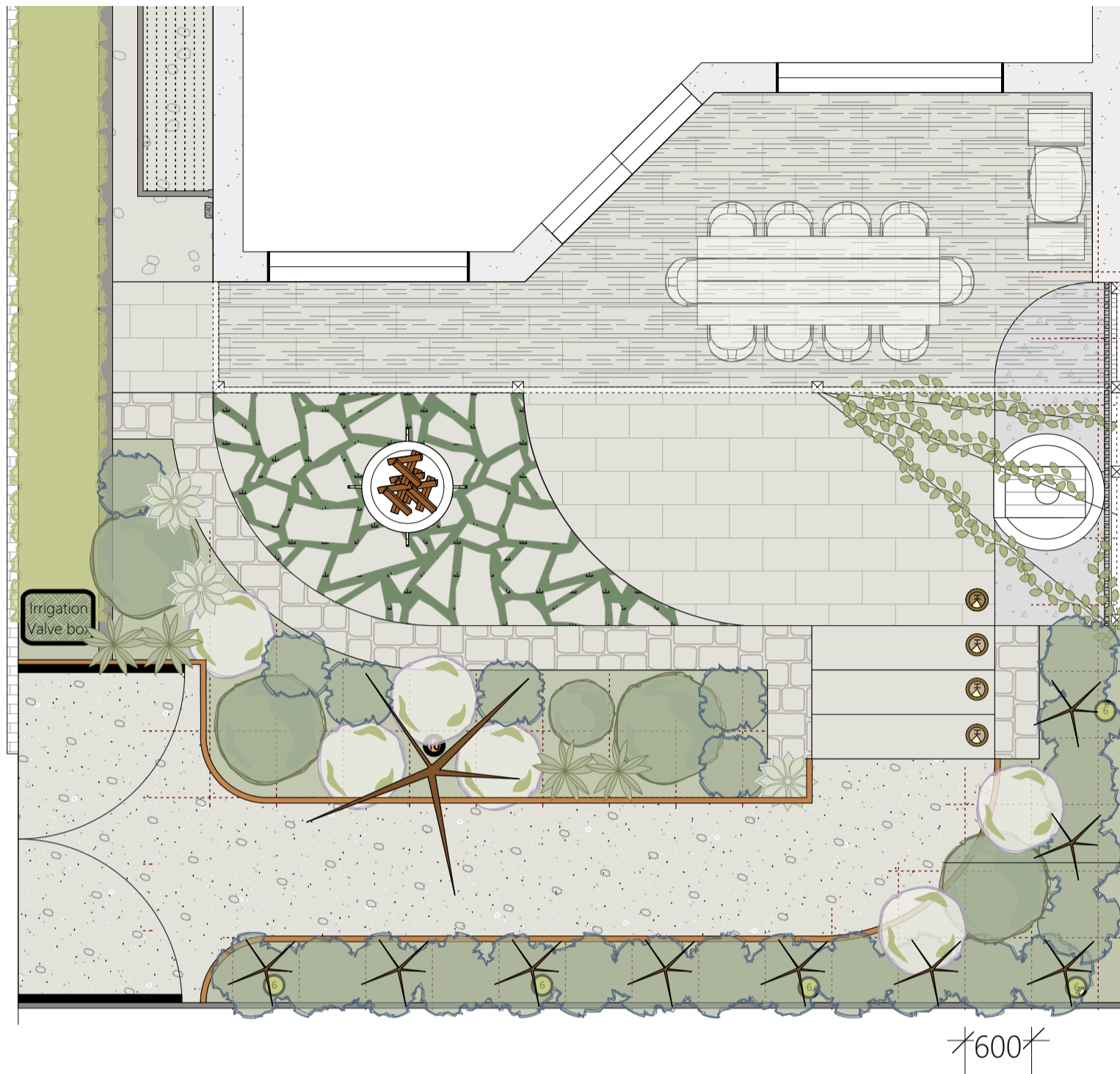
Scale: 1:100



3

UNDER PLANTING I BACK

Scale: 1:50



2

PLANT LEDGEND

- Laurus nobilis 'Baby Bay'
Baby Bay Sphered
- Westringia fruticosa 'Mundi' (Sphered)
Native Rosemary Sphere
- Stachys byzantina 'Big Ears'
'Big Ears' Lambs Ears
- Poa labillardieri
Tussock Grass
- Acmena smithii 'DOW30' PBR'
Sublime Hedge
- Viburnum tinus 'Eve Price'
'Eve Price'- Sphere
- Rosmarinus officinalis 'prostratus'
Groundcover Rosemary
- Trachelospermum jasminoides
Chinese Star Jasmine Climber
- Thymus citriodorus
Lemon Scented Thyme

4

PLANTING SCHEME (FRONT)



5

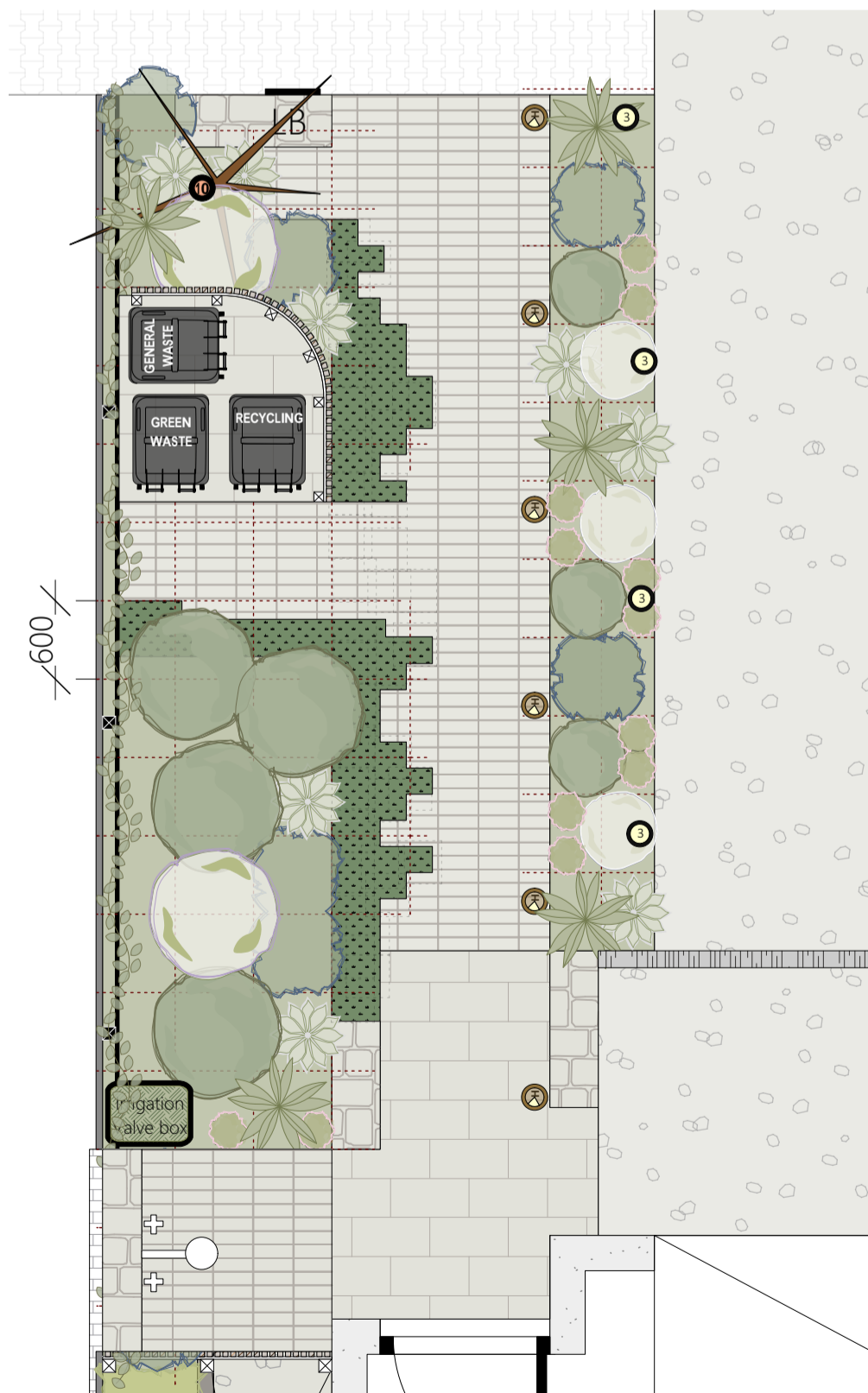
PLANTING SCHEME (BACK)



6

UNDER PLANTING I FRONT

Scale: 1:50



© Copyright Lee Gray | Drawings have been developed for the purpose of Landscape Design only. Seek engineering documents prior to the commencement of planning and constructing structures. Check all dimension on site prior to planning and construction. It is advised that all landscaping and building works be constructed by a qualified professional building a corner South Australian building scheme. While LGD will design a beautiful and functional landscape, the finality will depend on the quality of the trades employed by the client. All plants selected are healthy and have been successfully grown in the South Australian region; the success of these plants will depend on the soil preparation, planting and irrigation of the specimens. To reduce the construction price for clients LGD will recommend landscaping and building contractors but will not engage in the management of the project. All trades recommended have proven experience in working independently on LGD plans.

PROJECT 5 Henry Street, Port Elliot

CLIENT Curyer, Belinda and Leigh

DWG Underplanting Plan

DATE 16.10.2025

SCALE 1:100 on A1

PROJECT Version 3

DWG # 3 A

ISSUE # A

